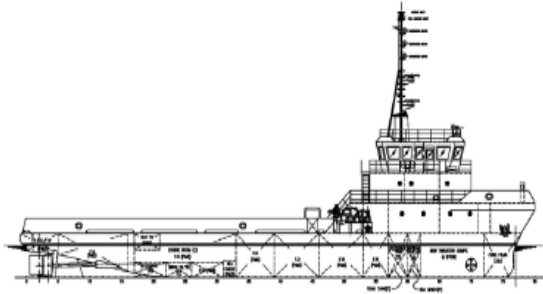


OMNI POWER SDN BHD

Unit B2/4/4 Level 3, One Ampang Business Avenue,
Jalan Ampang Utama 1 / 2 , 68000 Ampang, Selangor
Tel : +603 4256 0399 Fax :+603 4256 0331



37M ANCHOR HANDLING TUG/UTILITY VESSEL “MV OMNI AKIRA”

General

Owner : Omni Power Sdn Bhd
Operator : Omni Power Sdn Bhd
Vessel's name : Omni Akira
Builder : Sapor Shipbuilding Industries Sdn Bhd
Year Built : 2007
Type : Anchor Handling Tug/Utility
Classification and Society : BV
Flag : Malaysian
Date of next scheduled drydocking : Sept 2009

Performance

Certified Bollard Pull (Tonnes) : 45MT
Speed / Consumption (Non-Towing)
Approx. Daily Fuel Consumption (Fair weather)
Max Speed : 12.0 Kts (app)
Service Speed : 10 Kts (app)
Standby (main engines secured)
Approx. Towing/working Fuel Consumption Engine Power
Type (s) and Grade (s) of used : MGO

Dimension and Capacities /Discharge Rates :

L.O.A. (m) : 37 Breadth (m) : 10.6
Depth (m) : 4.9 Max. Draught (m) : 4.0m
Deadweight (mt)
GRT (mt) : m tons
Cargo Fuel max (m) : 50m³/hr at 60 M head
Fuel Capacity : 250M³
Drill water max (m) : N/A
Portable Water : 50m³ at 60 M head
Water capacity : 150 m³
Dry Bulk : N/A
Liquid Mud (M3/barrels) : N/A
Cargo Deck Area (m) 150m²
Capacity (m.t) :
Length (m) x Breadth (m) : 20m x 10m
Loading Bearing Capacity : 5mt/m²
Heavy Wight Brine (m3/barrels)
(max. SG)

Machinery

BHP Main Engines : 3200 Bhp
Engine Builder : Cummins
Number of Engines and type: 2 x 1600 bhp
Generators : 2 x Cummins 250 KW @1800 rpm
Stabilisers : nil
Bow Thruster (s) : 3 mt
Stern Thruster(s) N/A
Propellers / Rudders : 2 FPP in Kort Nozzles
Number and Pressure Rating of Bulk Compressors : N/A
Fuel Oil Metering System : Available and calibrated

Towing and Anchor Handling Equipment

Stern Roller (Dimensions) : 1.5 mx 5 m
Anchor Handling / Towing Winch : ME
Double drum Waterfall : 120mt Brake 50mt line pull
Rig Chain Locker Capacity (Linear feet of 3 in China) : NA
Tugger Winches : 2 x 5 mt
Chain Stopper Make and Type : 32mm, 42
Towing Wire : 42mm x 1000m
Spare Towing Wire : N/A
Work Wire : 42mm x 120 m
Spare Work Wire : N/A
Other Anchor Handling Equipment
(e.g. Pelican Hooks, Shackles, Stretcher etc.)
2 x 5 tonne Capstans
Hydraulic jaw c/w wire lifter : 100tans

Radio and Navigation Equipment

Radios
Single Side Band : Available
VHF : Available
Satcom : Available
Electronic Navigation Equipment
Gyro : Available
Radar : 2,48 nm
Autopilot : Available
Depth Sounder : Available
Wheelhouse with all round view, especially unobstructed to the rear. Wheelhouse must have duplicate controls facing aft : Comply

Fire Fighting Equipment

Class (FF1, FF2, FF3 other) ½ fifi
Fixed : Available
Portable
Other

Accommodation : Total : 18 pax

Crew : 13
Passangers : 5

Galley

Freezer Space 4m3
Cooler (m) : 8m3

Additional Equipment

Mooring Equipment : available
Oil pollution equipment , Spray boom etc

Standby/Survivor Certificate
Nos N.A.

Vessel is ISM accredited

Preliminary specification given is in good faith, and may change during construction